

PROPRIETARY AND CONFIDENTIAL

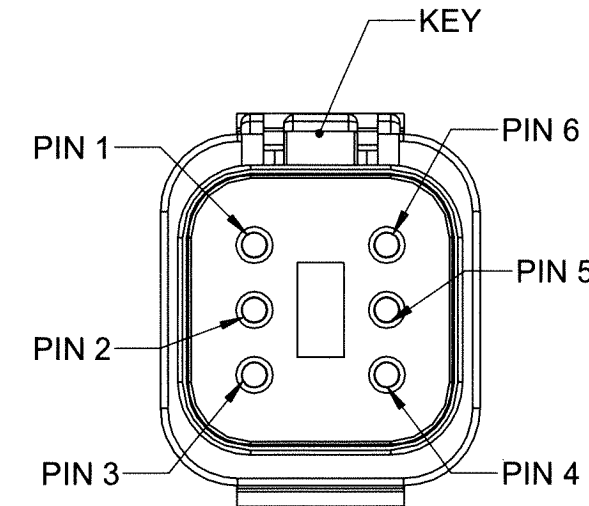
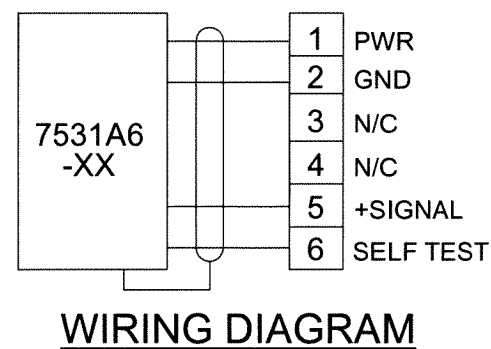
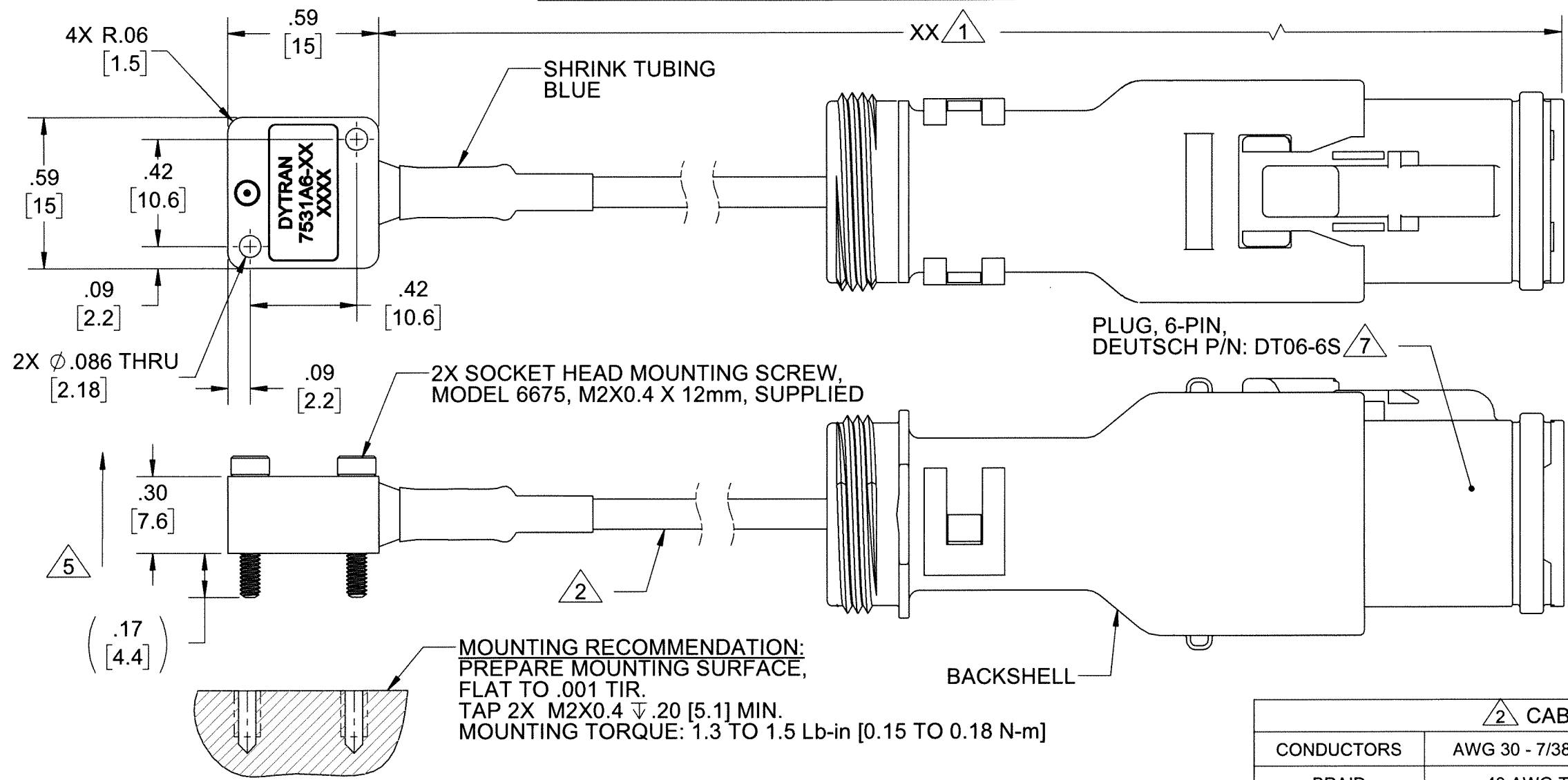
THE INFORMATION CONTAINED IN THIS DRAWING IS THE SOLE PROPERTY OF DYTRAN INSTRUMENTS INC. ANY REPRODUCTION IN PART OR AS A WHOLE WITHOUT THE WRITTEN PERMISSION OF DYTRAN INSTRUMENTS INC. IS PROHIBITED

1 CABLE LENGTH TOLERANCE

ENGLISH		[METRIC]	
≤1FT	+1/ -0 IN	≤0.3m	+25mm -0mm
>1 FT - 5 FT	+2/ -0 IN	.0.3 m-1.5m	+50mm -0mm
> 5 FT - 10 FT	+4/ -0 IN	>1.5m-3m	+100mm -0mm
>10 FT - 25FT	+6 / -0 IN	>3m-7.5m	+150mm -0mm
>25 FT	+5% / -0%	>7.5m	+5%/-0%

REVISIONS

REV.	ECN	DESCRIPTION	BY/DATE	CHK	APPR
A	14196	INITIAL RELEASE	KG 05/02/18	W	Em



MOUNTING RECOMMENDATION:
 PREPARE MOUNTING SURFACE,
 FLAT TO .001 TIR.
 TAP 2X M2X0.4 ∇ .20 [5.1] MIN.
 MOUNTING TORQUE: 1.3 TO 1.5 Lb-in [0.15 TO 0.18 N-m]

2 CABLE SPECIFICATIONS

CONDUCTORS	AWG 30 - 7/38 TIN PLATED COPPER, SANTOPRENE .007 WALL
BRAID	40 AWG TIN PLATED COPPER BRAID, 90% COVERAGE
JACKET	BLACK, SANTOPRENE, .013 NOM. WALL, Ø.118 MAX
TEMPERATURE	-55°C TO 120°C

- 7 MATES WITH DEUSTCH P/N: DT04-6P
- 6. OPERATING TEMPERATURE: -40°F TO +185°F. (-40°C TO +85°C)
- 5 ARROW INDICATES DIRECTION OF ACCELERATION FOR POSITIVE OUTPUT
- 4. WEGHT: 6.0 GRAMS, MAX. (LESS CABLE)
- 3. MATERIAL: ALUMINUM ALLOY, ANODIZED, COLOR: BLACK
- 2 CABLE, 6-CONDUCTORS. SEE TABLE FOR SPECIFICATIONS.
- 1 MODEL NUMBER: 7531M2-XX. "XX" DENOTES CABLE LENGTH IN FEET (MAXIMUM CABLE LENGTH 50 FT.). SEE TABLE FOR CABLE LENGTH TOLERANCE.

NOTES: UNLESS OTHERWISE SPECIFIED

UNLESS OTHERWISE SPECIFIED: INTERPRET DIM & TOL PER ASME Y14.5M - 1994. REMOVE BURRS. COUNTERSINK INTERNAL THDS 90° TO MAJOR DIA. CHAM EXT THDS 45° TO MINOR DIA. THD LENGTHS AND DEPTHS ARE FOR MIN FULL THDS. DIMENSIONS APPLY AFTER FINISHING.

UNLESS OTHERWISE SPECIFIED: DIMENSIONS ARE IN INCHES. DIMENSIONS IN BRACKETS [] ARE IN MILLIMETERS TOLERANCES ARE:

DECIMALS	METRIC	ANGLES
.XX ±.03	.X ±0.8	±1°
.XXX ±.010	.XX ±0.25	

APPROVALS: ORIG KG, CHK W, APP Em, DATE 05/02/18, 5/8/18, 5/1/18

DO NOT SCALE DRAWING

THIRD ANGLE PROJECTION USA

UNLESS OTHERWISE SPECIFIED: DIMENSIONS ARE IN INCHES. DIMENSIONS IN BRACKETS [] ARE IN MILLIMETERS TOLERANCES ARE:

DECIMALS METRIC ANGLES

.XX ±.03 .X ±0.8 ±1°

.XXX ±.010 .XX ±0.25

APPROVALS DATE

ORIG KG 05/02/18

CHK W 5/8/18

APP Em 5/1/18

DO NOT SCALE DRAWING

THIRD ANGLE PROJECTION USA

DYTRAN INSTRUMENTS, INC. Chatsworth, CA

MASTER ONLY IF IN RED

TITLE: OUTLINE/INSTALLATION DWG, 7531A6-XX

SIZE B CAGE CODE 2W033 DWG NO 127-7531A6-XX REV A

SCALE: 2:1 SHEET 1 OF 1

MODEL NUMBER 7531A6-XX	PERFORMANCE SPECIFICATIONS			DOC NO. PS7531A6-XX
	SINGLE AXIS, DC ACCELEROMETER			REV A, ECN 14196, 05/02/18



- **LOW COST**
- **WIDE SUPPLY VOLTAGE RANGE**
- **LOW CURRENT CONSUMPTION**

PHYSICAL

Weight, Max. (less cable)

Mounting

Cable

Type

Material

Connector [1]

Housing

Material

Isolation

ENGLISH		SI	
0.21	oz	6.0	grams
2X M2 Screws		2X M2 Screws	
6-conductor		6-conductor	
Santoprene		Santoprene	
6-pin, DT06-6S		6-pin, DT06-6S	
Aluminum, Anodized		Aluminum, Anodized	
Case Isolated		Case Isolated	

PERFORMANCE

Sensitivity, ±10% [2]

Acceleration Range

Frequency Range, -3dB

Resonance Frequency

Linearity [3]

Transverse Sensitivity Max

Spectral Noise

Sensitivity Change Due to Temperature

174	mV/g	17.7	mV/m/s ²
±5	Gpeak	±49.1	m/s ² peak
0 to 1600	Hz	0 to 1600	Hz
>5.5	kHz	>5.5	kHz
± 0.21	%F.S.	± 0.21	%F.S.
5	%	5	%
250	µGrms/√Hz	2453	µm/s ² rms/√Hz
±0.006	%/°F	±0.01	%/°C

ELECTRICAL

Supply Current

Supply Voltage Range

Output Impedance, Typ.

Output Bias Voltage

Output Range

Self-Test Output [4]

Turn-On Time

350	µA	350	µA
4 to 28	VDC	4 to 28	VDC
100	Ω	100	Ω
2.3 to 2.7	VDC	2.3 to 2.7	VDC
±0.975	VDC	±0.975	VDC
-90 to -350	mV	-90 to -350	mV
1	ms	1	ms

ENVIRONMENTAL

Shock Max

Vibration Max

Operating Temperature

Seal

10,000	g pk	98100	m/s ²
5000	g pk	49050	m/s ²
-40 to +185	°F	-40 to +85	°C
Epoxy		Epoxy	

Model	Sensitivity (mV/g)	Range (Gpeak)	Noise(µGrms/sqr(Hz))	Oper. Temp(°F)

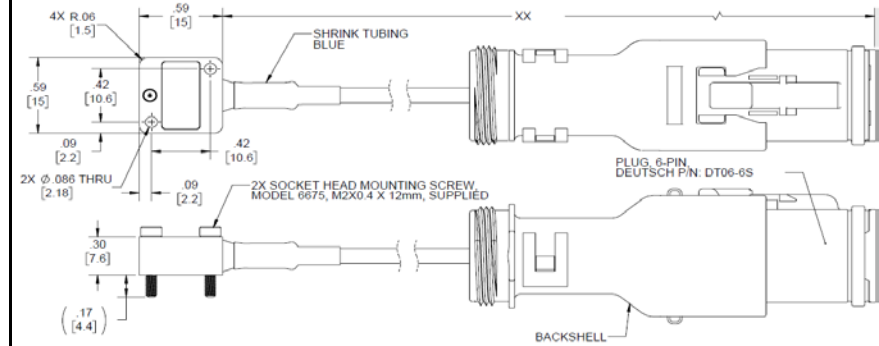
Please, refer to the performance specifications of the products in this family for detailed description

Supplied Accessories:

- 1) Accredited calibration certificate (ISO 17025)
- 2) Mounting Screw, Model 6675, M2X0.4 x 12mm, qty. 2

Notes:

- [1] Mates with Deustch P/N: DT04-6P
- [2] Measured at 100 Hz, 5 Grms per ISA RP 37.2
- [3] Linearity is % of specified full scale (or any less full-scale range), zero-based best fit straight line method.
- [4] Refer to the Operating Guide for instructions on how to use Self-Test feature



Units on the line drawing are in inches, units in brackets are in millimeters. Refer to 127-7531A6-XX for more information.



21592 Marilla Street, Chatsworth, California 91311 Phone: 818.700.7818 Fax:818.700.7880 www.dytran.com For permission to reprint this content, please contact info@dytran.com