

PROPRIETARY AND CONFIDENTIAL

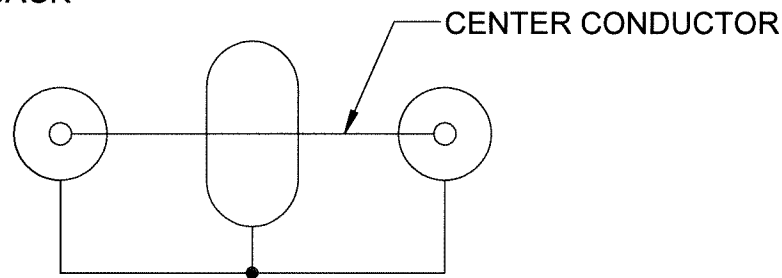
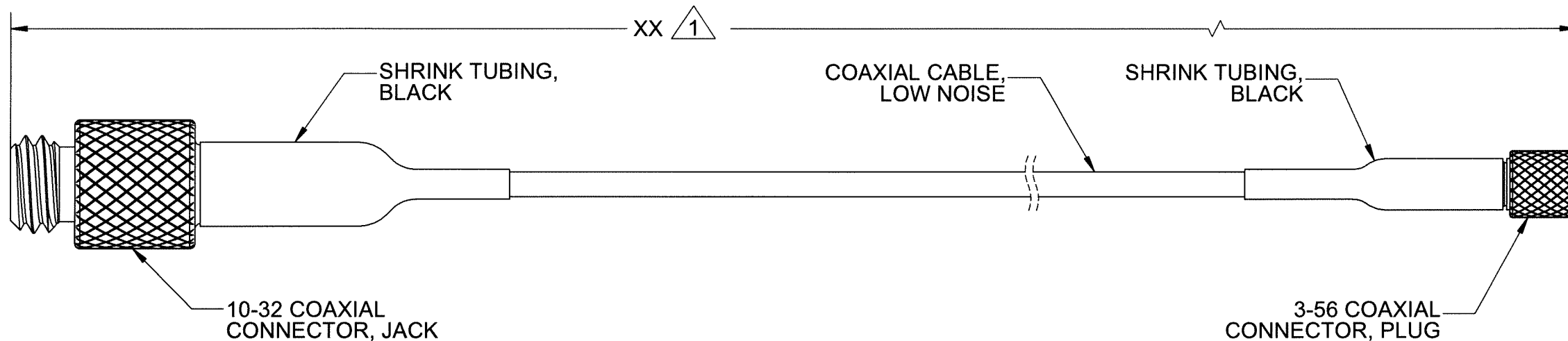
THE INFORMATION CONTAINED IN THIS DRAWING IS THE SOLE PROPERTY OF DYTRAN INSTRUMENTS INC. ANY REPRODUCTION IN PART OR AS A WHOLE WITHOUT THE WRITTEN PERMISSION OF DYTRAN INSTRUMENTS INC. IS PROHIBITED

1 CABLE LENGTH TOLERANCE

ENGLISH		METRIC	
≤1FT	+1/ -0 IN	≤0.3m	+25mm/-0mm
>1 FT - 5 FT	+2/ -0 IN	>0.3m-1.5m	+50mm/-0mm
> 5 FT - 10 FT	+4/ -0 IN	>1.5m-3m	+100mm/-0mm
>10 FT - 25FT	+6 / -0 IN	>3m-7.5m	+150mm/-0mm
>25 FT	+5% / -0%	>7.5m	+5%-0%

REVISIONS

REV.	ECN	DESCRIPTION	BY/DATE	CHK	APPR
N	11237	DELETED DYTRAN LABEL MARKING	EM 08/25/14	MH	DV
P	12402	SEE ECN	EM 12/21/15	MH	LN
R	14549	ADDED: NOTE 3: LOW OUTGASSING NOTE 4: OPERATING TEMPERATURE: -67 °F (-55 °C) TO +275 °F (+135 °C)	AM 10/12/18	LN	EM
T	15340	SEE ECN	DA, 09/25/19	KG	LW



SCHEMATIC DIAGRAM

2 CABLE SPECIFICATIONS

CABLE DIAMETER	.048 +/- .004 [1.22 +/-0.10 mm]
INNER CONDUCTOR	34AWG STRANDED SILVER PLATED COPPER ALLOY
RESISTANCE	98 OHMS/ 328 FT. @ 68 °F
DIELECTRIC	EXTRUDED PTFE WITH GRAPHITE LAYER DIAMETER: .020" [0.52 mm] NOM
OUTER CONDUCTOR	SILVER PLATED COPPER BRAIDED SHIELD. STRAND DIAMETER: .002 NOM. COVERAGE: 90% NOM.
OUTER JACKET	WRAPPED AND SINTERED PTFE, COLOR ORANGE
COATING	TETRA ETCH COATING
TEMPERATURE	-130°F (-90°C) TO +392°F (+200°C)
IMPEDANCE	50 OHMS
CAPACITANCE	2.5 pF/IN. [97 pF/m]
APPROX. WEIGHT	.042 OZ./ FT.

- 4. OPERATING TEMPERATURE: -67°F (-55°C) TO +275°F (+135°C)
- 3. CABLE IS LOW OUT-GASSING PER NASA SPECIFICATIONS OF TML (TOTAL MASS LOSS) LESS THAN 1%; AND CVCM (COLLECTED VOLATILE CONDENSABLE MASS) LESS THAN 0.1%.

- 2 SEE TABLE FOR CABLE SPECIFICATIONS
- 1 PART NUMBER 6003AXX (XX DENOTES LENGTH IN FEET)

NOTES: UNLESS OTHERWISE SPECIFIED

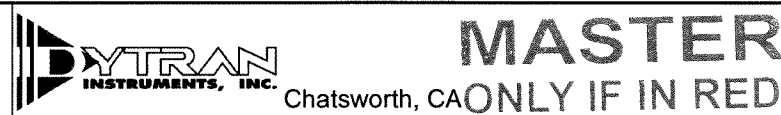
UNLESS OTHERWISE SPECIFIED:  
 INTERPRET DIM & TOL PER ASME Y14.5M - 1994.  
 REMOVE BURRS.  
 COUNTERSINK INTERNAL THDS 90° TO MAJOR DIA.  
 CHAM EXT THDS 45° TO MINOR DIA.  
 THD LENGTHS AND DEPTHS ARE FOR MIN FULL THDS.  
 DIMENSIONS APPLY AFTER FINISHING.

ALL MACHINED SURFACES:  $\sqrt{63}$   
 TOTAL RUNOUT WITHIN .005.  
 BREAK SHARP EDGES .005 TO .010.  
 MACHINED FILLET RADII .005 TO .015.  
 WELDING SYMBOLS PER AWS A2.4.  
 ABBREVIATIONS PER MIL-STD-12.

UNLESS OTHERWISE SPECIFIED:  
 DIMENSIONS ARE IN INCHES.  
 DIMENSIONS IN BRACKETS [ ] ARE IN MILLIMETERS  
 TOLERANCES ARE:

DECIMALS	METRIC	ANGLES
.XX ±.03	X ± 0.8	±1°
.XXX ±.010	.XX ±0.25	

APPROVALS		DATE
ORIG	EC	05/16/14
CHK	EM	06/25/14
APP	DV	09/08/14
DO NOT SCALE DRAWING		THIRD ANGLE PROJECTION USA



**MASTER**  
ONLY IF IN RED

TITLE: <b>OUTLINE/INSTALLATION DRAWING, MODEL 6003A</b>			
SIZE <b>B</b>	CAGE CODE <b>2W033</b>	DWG NO <b>127-6003A</b>	REV <b>T</b>
SCALE: 4:1		SHEET 1 OF 1	