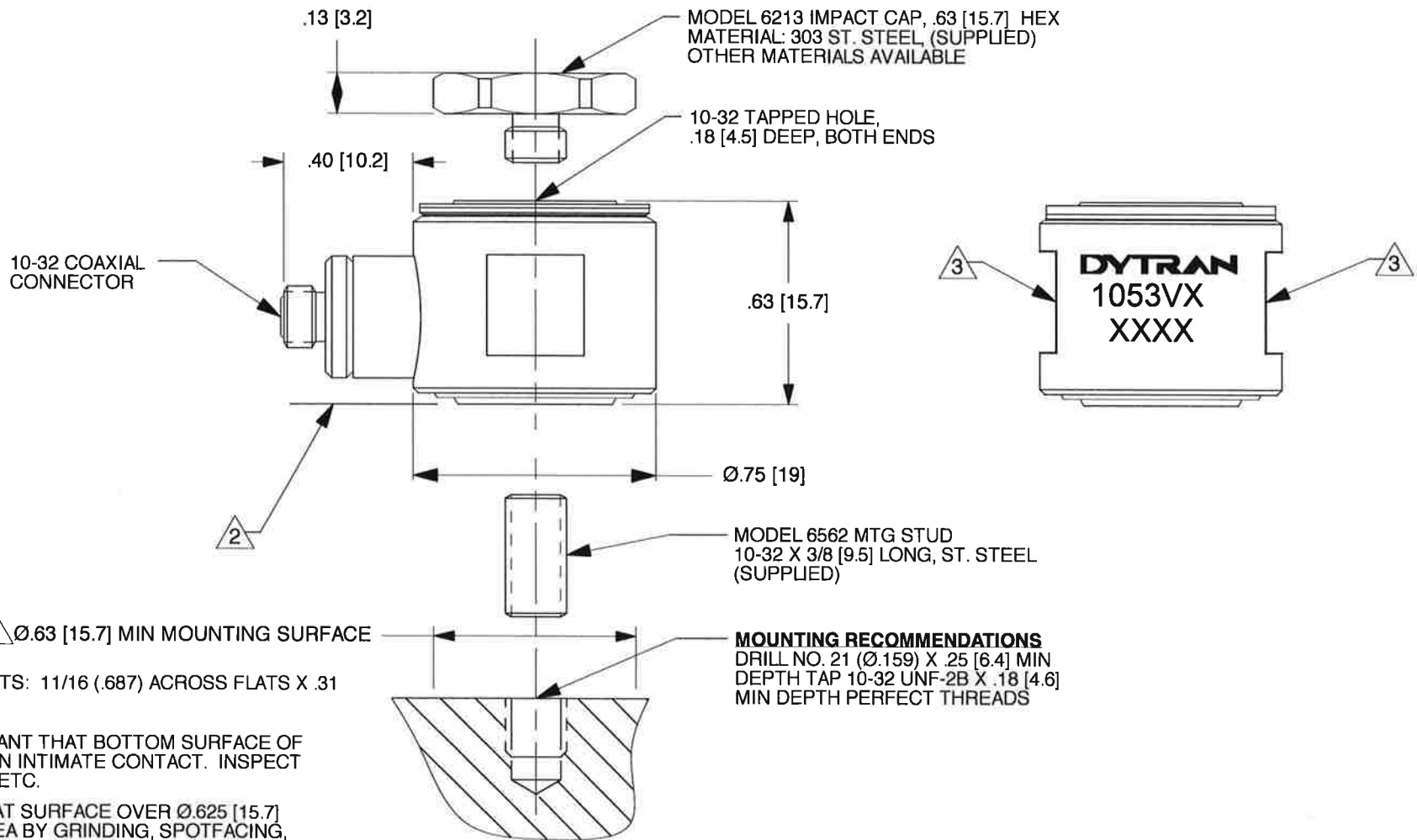




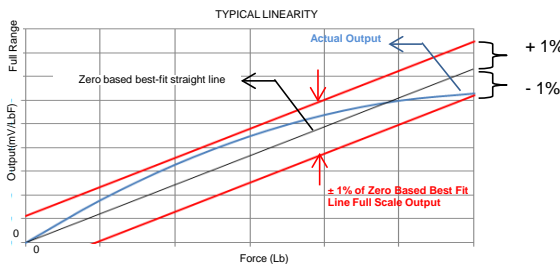
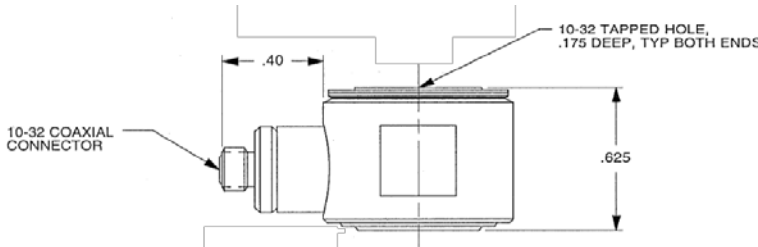
DYTRAN PROPRIETARY AND CONFIDENTIAL
 THE INFORMATION CONTAINED IN THIS DRAWING IS THE SOLE PROPERTY OF
 DYTRAN INSTRUMENTS, INC. AND ANY REPRODUCTION IN PART OR AS A WHOLE
 OR ANY OTHER DISSEMINATION OF THIS INFORMATION WITHOUT THE WRITTEN
 PERMISSION OF DYTRAN INSTRUMENTS, INC. IS PROHIBITED.


REV	ECN	DESCRIPTION	BY/DATE	CHK	APPR
A	11429	ADDED DIMENSION DIA .750	LA 11/05/14	JS	LN
B	13356	SEE ECN	RA 03/20/17	LA	W



		UNLESS OTHERWISE SPECIFIED: INTERPRET DIM & TOL PER ASME Y14.5M-1994 REMOVE BURRS COUNTERSINKS INTERNAL THDS 90° TO MAJOR DIA CHAM EXT THDS 45° TO MAJOR DIA THD LENGTHS AND DEPTHS ARE FOR THDS PER MIL-S- 7742 DIMENSIONS APPLY AFTER FINISHING.	UNLESS OTHERWISE SPECIFIED DIMENSIONS ARE IN INCHES. DIMENSION IN BRACKETS [] ARE IN MILLIMETERS. TOLERANCES ARE: INCHES METRIC ANGLES .XX ± .03 .X ± 0.8 ± 1° .XXX ± .010 .XX ± 0.25			CONTRACT NO.		
USED ON	NEXT ASSY		MATERIAL			APPROVALS		DATE
APPLICATION			FINISH			ORIG	N.C.	1/15/01
THIRD ANGLE PROJECTION USA			DO NOT SCALE DRAWING			CHK	N.C.	1/15/01
		ALL MACHINED SURFACES TOTAL RUNOUT WITHIN .005 BREAK SHARP EDGES .005 TO .010 MACHINE FILLET RADII .005 TO .015 WELDING SYMBOLS PER AWS A2.4 ABBREVIATIONS PER MIL-STD-12				APP	LN.	11/19/14
						APP		

MASTER COPY ONLY IF IN RED DYTRAN INSTRUMENTS, INC. CHATSWORTH, CA.					
TITLE					
OUTLINE/INSTALLATION DRAWING, MODEL SERIES 1053V					
SIZE	CAGE CODE	DWG. NO.	REV		
A	2W033	127-1053V	B		
SCALE:	2X	ASHLAR GRAPHITE	SHEET 1 OF 1		

Model Number 1053V1		PERFORMANCE SPECIFICATION					DOC NO PS1053V1																																																	
		DYNAMIC FORCE SENSOR			REV A, ECN 11034, 06/25/14																																																			
		<div>• COMPRESSIVE & TENSILE LOADINGS</div> <div>• EXCELLENT LINEARITY</div>																																																						
		<div>This family also includes:</div> <table><tr><th>Model</th><th>Sens. (mV/lbf)</th><th>Compression Range (lbf)</th><th>Max. Compression (lbf)</th><th>Tension Range (lbf)</th><th>Max. Tension (lbf)</th><th>T.C. (sec)</th><th>Resolution (lbf, RMS)</th></tr><tr><td>1053V2</td><td>100</td><td>50</td><td>1000</td><td>50</td><td>200</td><td>100</td><td>0.0007</td></tr><tr><td>1053V3</td><td>50</td><td>100</td><td>2000</td><td>100</td><td>200</td><td>500</td><td>0.0014</td></tr><tr><td>1053V4</td><td>10</td><td>500</td><td>10000</td><td>200</td><td>200</td><td>2000</td><td>0.007</td></tr><tr><td>1053V5</td><td>5</td><td>1,000</td><td>15000</td><td>200</td><td>200</td><td>2000</td><td>0.014</td></tr><tr><td>1053V6</td><td>1</td><td>5,000</td><td>15000</td><td>200</td><td>200</td><td>2000</td><td>0.07</td></tr></table>							Model	Sens. (mV/lbf)	Compression Range (lbf)	Max. Compression (lbf)	Tension Range (lbf)	Max. Tension (lbf)	T.C. (sec)	Resolution (lbf, RMS)	1053V2	100	50	1000	50	200	100	0.0007	1053V3	50	100	2000	100	200	500	0.0014	1053V4	10	500	10000	200	200	2000	0.007	1053V5	5	1,000	15000	200	200	2000	0.014	1053V6	1	5,000	15000	200	200	2000	0.07
Model	Sens. (mV/lbf)	Compression Range (lbf)	Max. Compression (lbf)	Tension Range (lbf)	Max. Tension (lbf)	T.C. (sec)	Resolution (lbf, RMS)																																																	
1053V2	100	50	1000	50	200	100	0.0007																																																	
1053V3	50	100	2000	100	200	500	0.0014																																																	
1053V4	10	500	10000	200	200	2000	0.007																																																	
1053V5	5	1,000	15000	200	200	2000	0.014																																																	
1053V6	1	5,000	15000	200	200	2000	0.07																																																	
		Refer to the performance specifications of the products in this family for detailed description.																																																						
		<div>Supplied Accessories:</div> <div>1) Accredited calibration certificate (ISO 17025)</div> <div>2) Model 6213 steel impact cap, Model 6562 10-32 mounting stud</div>																																																						
		<div>Notes:</div> <div>[1] Absolute maximum tension. Do not exceed in any case!</div> <div>[2] Percent of full scale or any lesser range, Zero based best-fit straight line method.</div> <div>[3] Do not apply power to this system without current limiting, 20 mA MAX.To do so will destroy the integral IC amplifier</div> <div>[4] In the interest of constant product improvement, we reserve the right to change specifications without notice.</div>																																																						
		<div>Typical Linearity</div> 																																																						
																																																								
		Units on the line drawing are in inches, units in brackets are in millimeters. Refer to 127-1053V for more information.																																																						
<div>PHYSICAL</div> <div>Weight, Max.</div> <div>Connector</div> <div>Material</div> <div>Sensing Element</div>		<table><tr><th colspan="2">ENGLISH</th><th colspan="2">SI</th></tr><tr><td>1.0</td><td>oz</td><td>28</td><td>grams</td></tr><tr><td>10-32</td><td></td><td>10-32</td><td></td></tr><tr><td>Stainless Steel</td><td></td><td>Stainless Steel</td><td></td></tr><tr><td>Quartz</td><td></td><td>Quartz</td><td></td></tr><tr><td>Compression</td><td></td><td>Compression</td><td></td></tr></table>							ENGLISH		SI		1.0	oz	28	grams	10-32		10-32		Stainless Steel		Stainless Steel		Quartz		Quartz		Compression		Compression																									
ENGLISH		SI																																																						
1.0	oz	28	grams																																																					
10-32		10-32																																																						
Stainless Steel		Stainless Steel																																																						
Quartz		Quartz																																																						
Compression		Compression																																																						
<div>PERFORMANCE</div> <div>Sensitivity, ± 10 %</div> <div>Compression Range</div> <div>Maximum Compression</div> <div>Tension Range</div> <div>Maximum Tension [1]</div> <div>Resolution</div> <div>Linearity [2]</div> <div>Resonant Frequency, Unloaded</div> <div>Stiffness, Force Sensor</div>		<table><tr><td>500</td><td>mV/lbf</td><td>112.4</td><td>mV/N</td></tr><tr><td>10</td><td>lbf</td><td>44.5</td><td>N</td></tr><tr><td>200</td><td>lbf</td><td>890</td><td>N</td></tr><tr><td>10</td><td>lbf</td><td>44.5</td><td>N</td></tr><tr><td>200</td><td>lbf</td><td>890</td><td>N</td></tr><tr><td>0.00014</td><td>lbf, rms</td><td>0.00062</td><td>N</td></tr><tr><td>±1</td><td>% Full Scale</td><td>±1</td><td>% Full Scale</td></tr><tr><td>75</td><td>kHz</td><td>75</td><td>kHz</td></tr><tr><td>11.4</td><td>lbf/μin</td><td>2.0</td><td>kN/μm</td></tr></table>							500	mV/lbf	112.4	mV/N	10	lbf	44.5	N	200	lbf	890	N	10	lbf	44.5	N	200	lbf	890	N	0.00014	lbf, rms	0.00062	N	±1	% Full Scale	±1	% Full Scale	75	kHz	75	kHz	11.4	lbf/μin	2.0	kN/μm												
500	mV/lbf	112.4	mV/N																																																					
10	lbf	44.5	N																																																					
200	lbf	890	N																																																					
10	lbf	44.5	N																																																					
200	lbf	890	N																																																					
0.00014	lbf, rms	0.00062	N																																																					
±1	% Full Scale	±1	% Full Scale																																																					
75	kHz	75	kHz																																																					
11.4	lbf/μin	2.0	kN/μm																																																					
<div>ENVIRONMENTAL</div> <div>Maximum Shock, Unloaded</div> <div>Maximum Vibration, Unloaded</div> <div>Temperature Range</div> <div>Thermal Coefficient</div> <div>Seal</div>		<table><tr><td>10,000</td><td>g pk</td><td>98100</td><td>m/s²</td></tr><tr><td>5,000</td><td>g pk</td><td>49050</td><td>m/s²</td></tr><tr><td>-100 to +250</td><td>°F</td><td>-73 to +121</td><td>°C</td></tr><tr><td>0.03</td><td>%/°F</td><td>0.05</td><td>%/°C</td></tr><tr><td>Epoxy</td><td></td><td>Epoxy</td><td></td></tr></table>							10,000	g pk	98100	m/s ²	5,000	g pk	49050	m/s ²	-100 to +250	°F	-73 to +121	°C	0.03	%/°F	0.05	%/°C	Epoxy		Epoxy																													
10,000	g pk	98100	m/s ²																																																					
5,000	g pk	49050	m/s ²																																																					
-100 to +250	°F	-73 to +121	°C																																																					
0.03	%/°F	0.05	%/°C																																																					
Epoxy		Epoxy																																																						
<div>ELECTRICAL</div> <div>Output Voltage F.S</div> <div>Output Impedance</div> <div>Bias Voltage</div> <div>Compliance Voltage Range</div> <div>Supply Current Range [3]</div> <div>Discharge Time Constant, Nom</div>		<table><tr><td>±5</td><td>V</td><td>±5</td><td>V</td></tr><tr><td><100</td><td>Ω</td><td><100</td><td>Ω</td></tr><tr><td>7.5 to 9.5</td><td>VDC</td><td>7.5 to 9.5</td><td>VDC</td></tr><tr><td>18 to 30</td><td>VDC</td><td>18 to 30</td><td>VDC</td></tr><tr><td>2 to 20</td><td>mA</td><td>2 to 20</td><td>mA</td></tr><tr><td>50</td><td>Sec</td><td>50</td><td>Sec</td></tr></table>							±5	V	±5	V	<100	Ω	<100	Ω	7.5 to 9.5	VDC	7.5 to 9.5	VDC	18 to 30	VDC	18 to 30	VDC	2 to 20	mA	2 to 20	mA	50	Sec	50	Sec																								
±5	V	±5	V																																																					
<100	Ω	<100	Ω																																																					
7.5 to 9.5	VDC	7.5 to 9.5	VDC																																																					
18 to 30	VDC	18 to 30	VDC																																																					
2 to 20	mA	2 to 20	mA																																																					
50	Sec	50	Sec																																																					



21592 Marilla Street, Chatsworth, California 91311 Phone: 818.700.7818 Fax:818.700.7880 www.dytran.com
For permission to reprint this content, please contact info@dytran.com



21592 Marilla Street, Chatsworth, California 91311 Phone: 818.700.7818 Fax: 818.700.7880 www.dytran.com
 For permission to reprint this content, please contact info@dytran.com