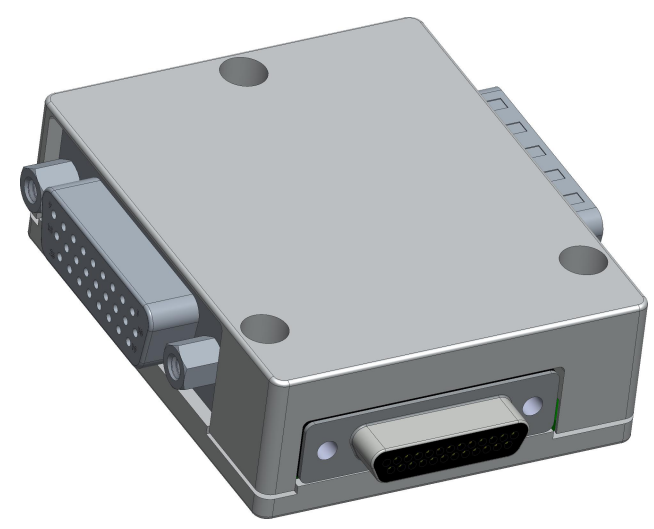
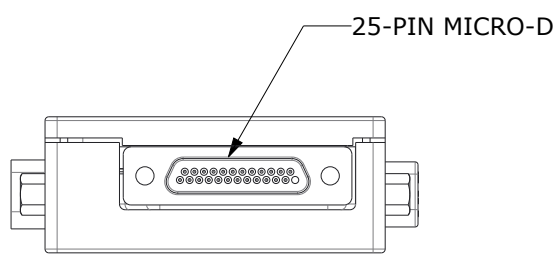


INTELLECTUAL PROPERTY STATEMENT  
 This drawing contains information that is the property of Diversified Technical Systems, Inc. (DTS). All copyright, patent, and ownership rights are retained. This information shall not be disclosed, reproduced in whole or in part, or used for manufacture without prior written consent from DTS.

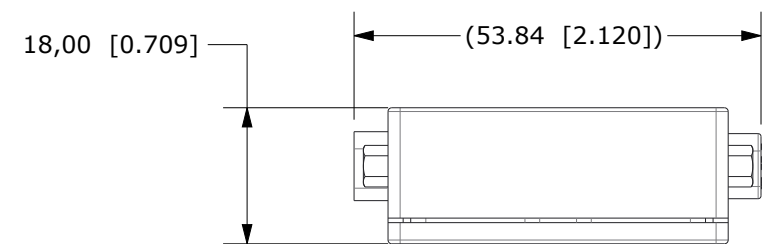
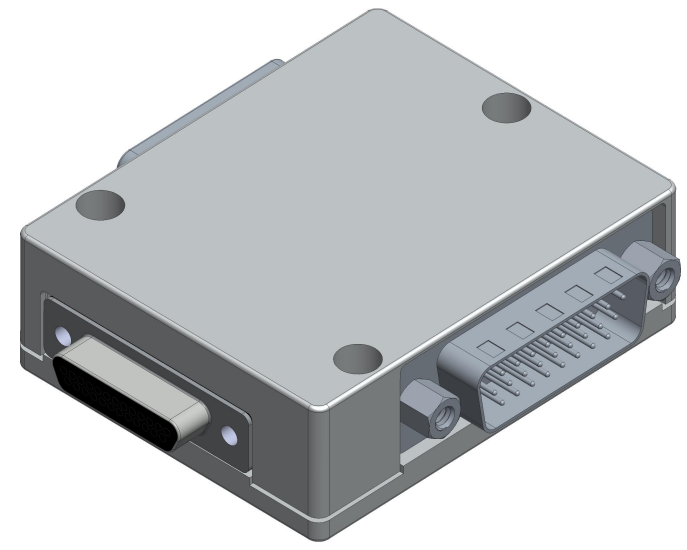
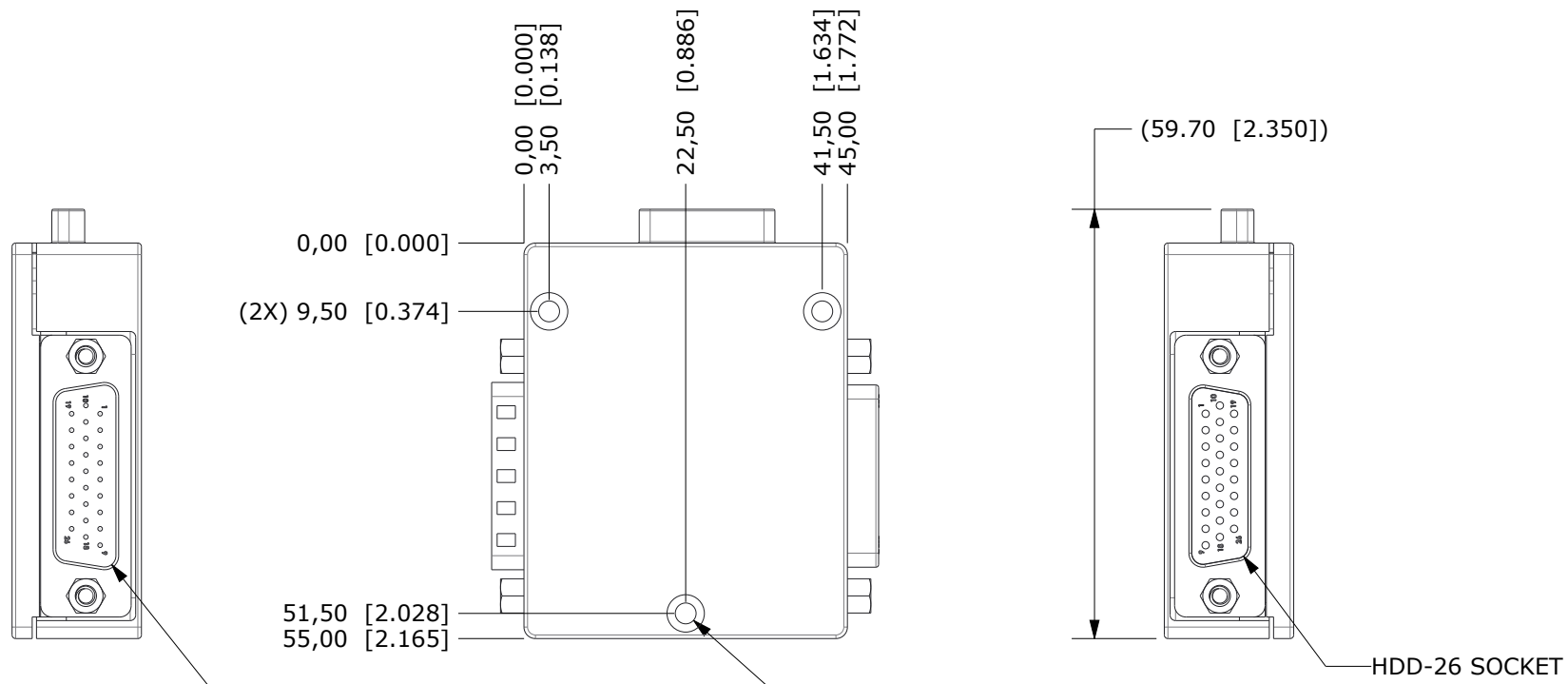
**RoHS**  
 Manufacture/fabricate to meet the EU RoHS Directive 2011/65/EU and RoHS Annex II phthalates

REV	ZONE	DESCRIPTION	DATE	BY
0		ORIGINAL RELEASE	2019-09-03	JC
1		ADDED SYSTEM UP/DOWN CONNECTOR PINOUT	2020-05-27	JC



SCALE 1.25:1

SYSTEM UP/DOWN CONNECTORS		
PIN	WIRE COLOR	FUNCTION
1	BLACK (RED)	VDC INPUT
2	BLACK (BLUE)	TX1P
3	BLUE (BLACK)	TX1N
4	BLACK (ORANGE)	RX1P
5	ORANGE (BLACK)	RX1N
6	RED (WHITE)	TX2P
7	WHITE (RED)	TX2N
8	RED (YELLOW)	RX2P
9	YELLOW (RED)	RX2N
10	RED (BLACK)	VDC INPUT
11	BLACK (WHITE)	VDC INPUT
12	BLACK (GREEN)	GROUND
13	BLACK (YELLOW)	PPS
14	BLACK (BROWN)	START
15	RED (GREEN)	UART_TX_P
16	GREEN (RED)	UART_TX_N
17	RED (BROWN)	UART_RX_P
18	BROWN (RED)	UART_RX_N
19	WHITE (BLACK)	GROUND
20	GREEN (BLACK)	GROUND
21	YELLOW (BLACK)	GROUND
22	BROWN (BLACK)	ON
23	RED (BLUE)	STATUS
24	BLUE (RED)	EVENT
25	RED (ORANGE)	IRIG
26	ORANGE (RED)	CASE



MASS: 84 ± 8 GRAMS

SEAL BEACH, CA 90740 562-493-0158 www.dtsweb.com	DESCRIPTION: SLICE6 AIR, CHAIN MODULE, MOUNTING DRAWING	
	DTS P/N: 13006-90460	REV: 1
MATERIAL: 6061-T6 ALUMINUM W/ ELECTROLESS NICKEL PLATING	DRAWN: J CASEY	
UNLESS OTHERWISE SPECIFIED: UNITS = MM [INCH] DIMENSIONAL TOLERANCES ±.254 [0.010"] INTERPRET PER ASME Y14.5. DO NOT SCALE.	DATE: 2019-09-03	SIZE: B SCALE: 1:1 SHEET: 1 OF 1