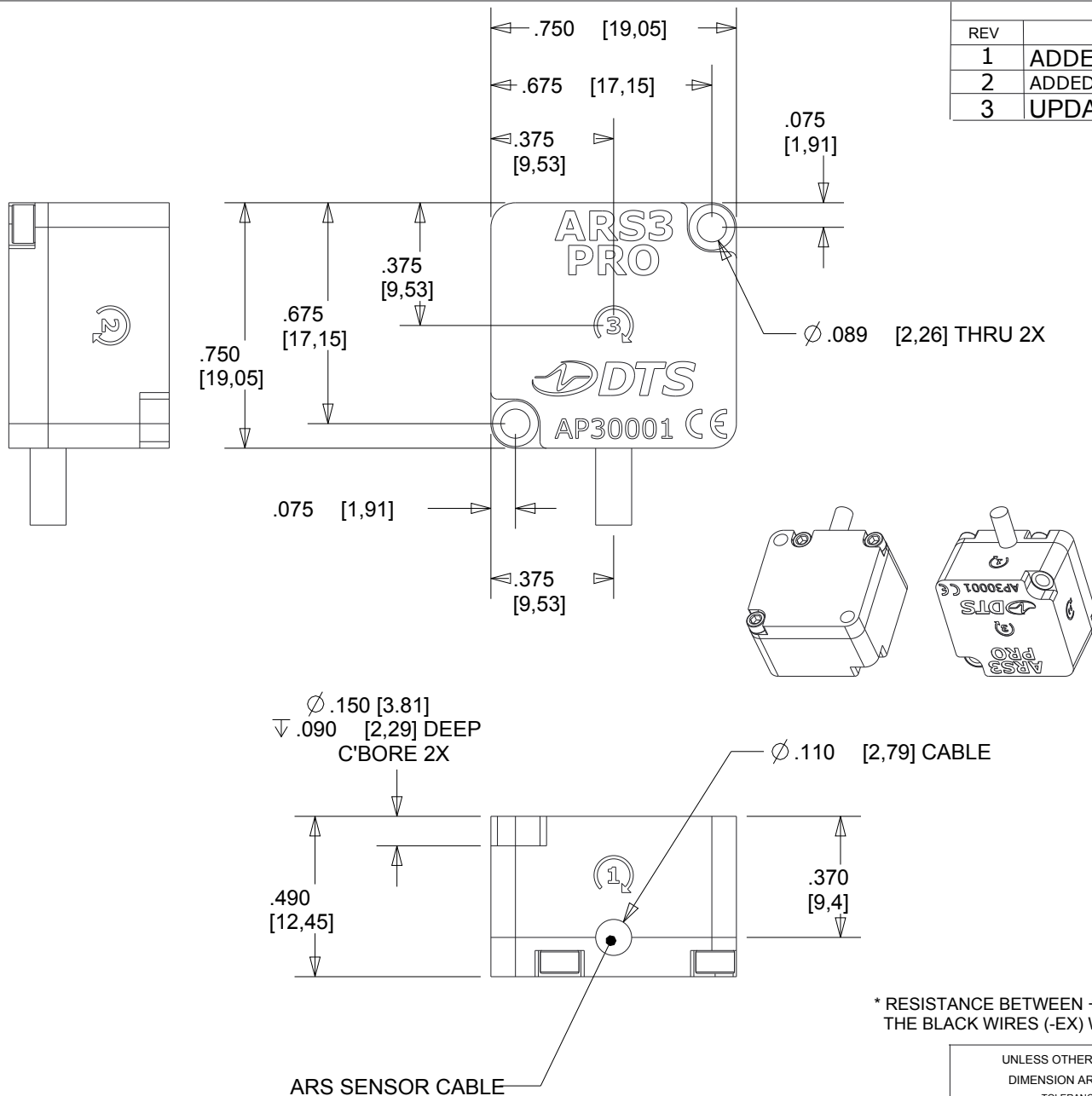


REVISIONS			
REV	DESCRIPTION	DATE	APPR
1	ADDED METRIC DIMS	6/16/14	GN
2	ADDED INFO ON DIFFERENTIATING -EX WIRES	1/24/17	EK
3	UPDATED SCREW LENGTH (WAS 5/8")	2/17/17	EK

### WIRE COLOR & PIN ASSIGNMENTS



AXIS	FUNCTION	COLOR	PIN
<b>1</b>	+EXCITATION	RED	6
	-EXCITATION*	BLACK (1)	7
	+SIGNAL	GREEN	1
	-SIGNAL	WHITE	5
	+ID		2
<b>2</b>	+EXCITATION	BROWN	8
	-EXCITATION*	BLACK (2)	13
	+SIGNAL	BLUE	4
	-SIGNAL	YELLOW	3
	+ID		9
<b>3</b>	+EXCITATION	ORANGE	11
	-EXCITATION*	BLACK (3)	12
	+SIGNAL	GRAY	10
	-SIGNAL	PURPLE	14
	+ID		15
<b>ALL</b>	-ID / SHIELD	SHIELD	16



\* RESISTANCE BETWEEN +SIG AND -EX IS <5K OHM FOR EACH CHANNEL. USE A DMM TO TEST THE BLACK WIRES (-EX) WITH THE COLOR-CODED +SIG WIRES TO FIND THE CORRECT PAIRING.

**NOTES:**  
 MASS CG OF ARS3 PRO IS CENTER OF VOLUME  
 MOUNT USING 2-56 x 9/16" OR M2 x 16MM SCREWS  
 TORQUE TO 2.5 IN-LB CLEAN AND DRY

UNLESS OTHERWISE SPECIFIED DIMENSION ARE IN INCHES TOLERANCES ARE: FRACTIONS: DECIMALS: ANGLES: MACHINED: ± 1/64 .X ± .1 ± .5° 125 .XX ± .01 .XXX ± .002		909 ELECTRIC AVE, SUITE 206 SEAL BEACH, CA 90740 562-493-0158	
DO NOT SCALE DRAWING		NAME/DESC: <b>ARS3 PRO, MOUNTING DRAWING</b>	
MATERIAL: <b>6061-T6 ALUMINUM CASE</b>	DRAWING NO: <b>14800-51000-TCN</b>	REV: <b>3</b>	
DRAWN BY: <b>G NEWTON 4/21/2014</b>		SIZE: <b>A</b>	SCALE <b>2:1</b>
		SHEET <b>1 OF 1</b>	